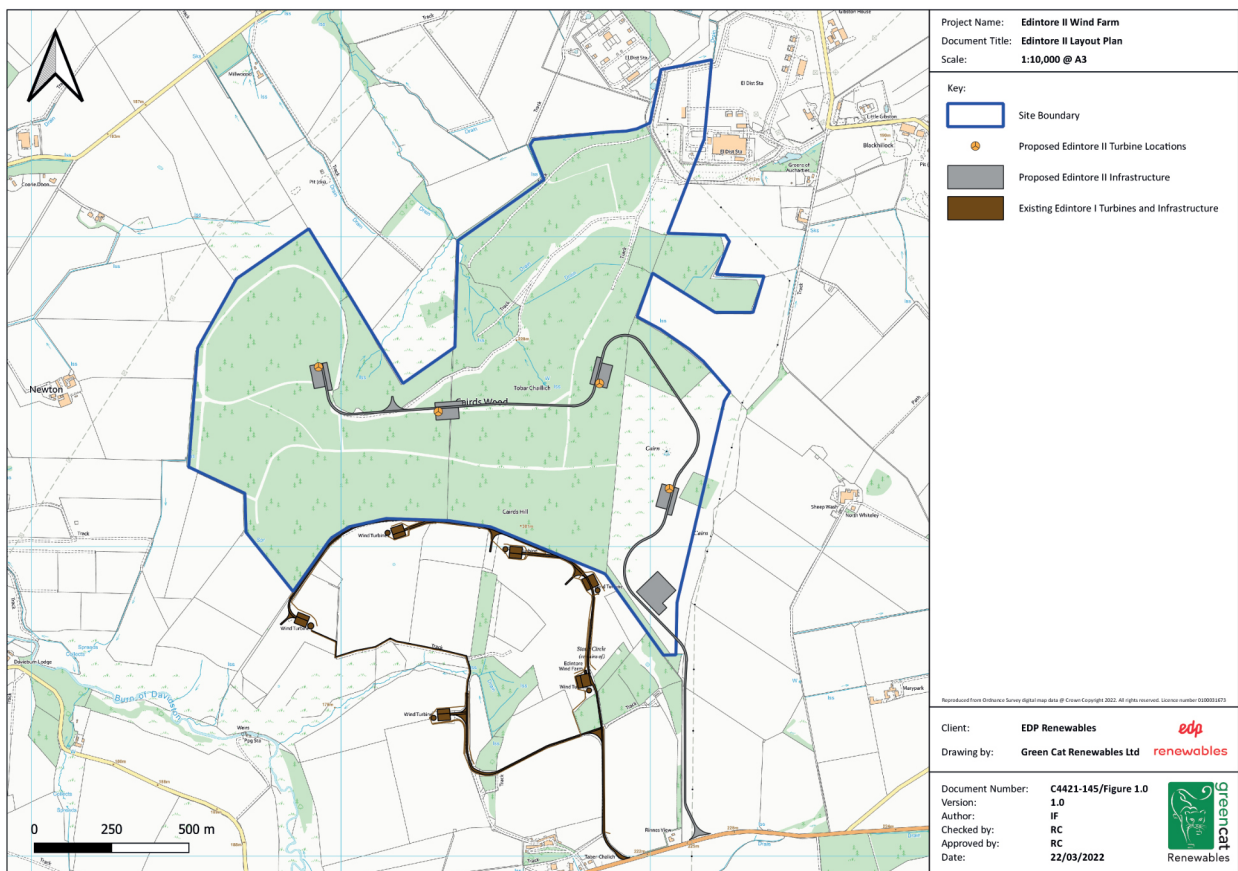


The Proposal

The proposed development has been designed to form a modest extension to the operational Edintore Wind Farm. Through a detailed design process the development has been refined from seven wind turbines at the scoping phase to the four wind turbines as presented today. Each wind turbine measures 149.9m to the blade tip. It is considered that the proposed layout offers a balanced and modest extension to the operational wind turbines while considering key impacts such as the views from Keith and the surrounding area, the hydrological environment and noise.

The final design has been reached through discussion with Moray Council, key stakeholders and the EDP Renewables project team.



edp

renewables